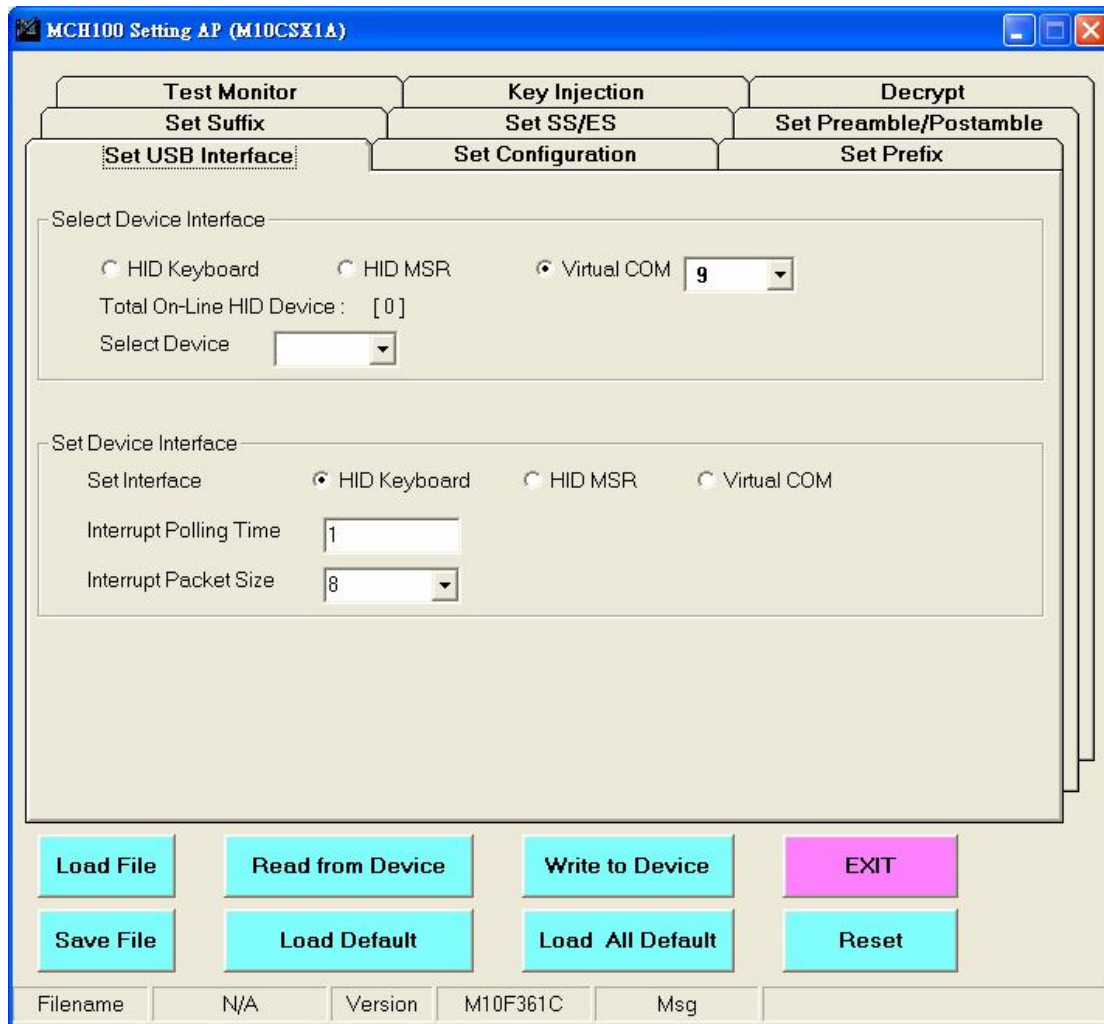


MCH100 Simple Test Guide

- First install MCH100 Setting AP, “M10CSX1A”
- Plug MCH100 reader into an USB port
- Manually install MCH100 USB Virtual-COM driver
- Open MCH100 Setting AP
- In Setting AP, select “Virtual COM” and port number on “Select Device Interface” item
- Press “Read From EEPROM”



- Select “Test Monitor” tab
- Press “Start Test”
- Swipe the card for the test

